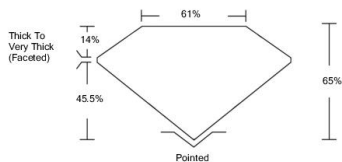




LG497155110

**LABORATORY GROWN DIAMOND REPORT**

**PROPORTIONS**



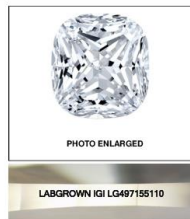
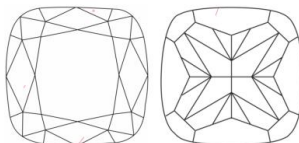
**GRADING SCALES**

COLOR GRADING SCALE	CL	NC	FT	VL	LT	
	COLORLESS DP	NEAR COLORLESS S4	FAINT KM	VERY LIGHT NH	LIGHT S2	
CLARITY (IGI) GRADING SCALE	FL	IF	VVS	VS	S	I
	FLAWLESS INTERNALLY FLAWLESS	VERY VERY SLIGHTLY INCLUDED	VERY SLIGHTLY INCLUDED	SLIGHTLY INCLUDED	INCLUDED	

The laboratory grown diamond described in this Report ("Report") has been graded, tested, analyzed, measured and/or described by International Gemological Institute (IGI). A laboratory grown diamond is one that has essentially the same chemical, physical and optical properties as a mined diamond, with the exception of being grown by man (or manufactured product). IGI employs and utilizes those techniques and equipment currently available to IGI, including, without limitation, for magnification, collected light traps, binocular microscope, master color comparison stones, non-contact optical measuring device, Diamond Sure™ Diamond Viewer™ Spectrophotometer and such other instruments and/or processes as deemed appropriate by IGI. This Report includes additional security features. A duly accredited gemologist or gemmer can advise you with respect to the importance of and interrelationship between cut, color, clarity and carat weight. **THIS REPORT IS NEITHER A GUARANTEE, VALUATION, NOR APPRAISAL OF THE GEMSTONE DESCRIBED HEREIN. PLEASE REVIEW THE LIMITATIONS AND RESTRICTIONS SET FORTH ABOVE. FOR ADDITIONAL INFORMATION, IMPORTANT LIMITATIONS AND DISCLAIMERS, PLEASE GO TO WWW.IGI.ORG OR CALL 1-888-895-5555.**

© INTERNATIONAL GEMOLOGICAL INSTITUTE, INC.

**CLARITY CHARACTERISTICS**



LABGROWN IGI LG497155110

**LASERSCRIBE<sup>SM</sup>**

**KEY TO SYMBOLS**

Red symbols indicate internal characteristics.  
Green symbols indicate external characteristics.

October 13, 2021

IGI Report Number **LG497155110**

Description **LABORATORY GROWN DIAMOND**

Shape and Cutting Style **SQUARE CUSHION BRILLIANT**

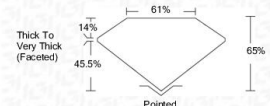
Measurements **8.19 X 7.95 X 5.17 MM**

**GRADING RESULTS**

Carat Weight **3.01 CARATS**

Color Grade **H**

Clarity Grade **VS 2**



**ADDITIONAL GRADING INFORMATION**

Polish **EXCELLENT**

Symmetry **EXCELLENT**

Fluorescence **NONE**

Inscription(s) **LABGROWN IGI LG497155110**

Comments: This Laboratory Grown Diamond was created by Chemical Vapor Deposition (CVD) growth process and may include post-growth treatment.  
Type IIa



© IGI 2020, International Gemological Institute

FD - 10 20

October 13, 2021  
IGI Report No. LG497155110  
Shape: Square Cushion Brilliant  
Carat Weight: 3.01  
Color Grade: H  
Clarity (IGI): VS 2  
Thick To Very Thick (Faceted): 14%  
Depth: 45.5%  
Width: 61%  
Height: 65%  
Cut: Excellent  
Polish: Excellent  
Symmetry: Excellent  
Fluorescence: None  
Inscription(s): LABGROWN IGI LG497155110  
Comments: This Laboratory Grown Diamond was created by Chemical Vapor Deposition (CVD) growth process and may include post-growth treatment.  
Type IIa