



INTERNATIONAL GEMOLOGICAL INSTITUTE

ELECTRONIC COPY

LG670407955

LABORATORY GROWN DIAMOND REPORT

December 17, 2024

IGI Report Number

LG670407955

Description

LABORATORY GROWN DIAMOND

Shape and Cutting Style

CUSHION MODIFIED BRILLIANT

Measurements

5.46 X 4.10 X 2.76 MM

GRADING RESULTS

Carat Weight

0.48 CARAT

Color Grade

D

Clarity Grade

INTERNALLY FLAWLESS

ADDITIONAL GRADING INFORMATION

Polish

VERY GOOD

Symmetry

VERY GOOD

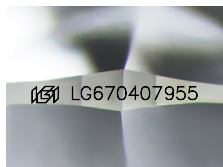
Fluorescence

NONE

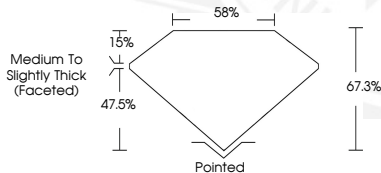
Inscription(s)

IGI LG670407955

Comments: This Laboratory Grown Diamond was created by Chemical Vapor Deposition (CVD) growth process. Type IIa



Sample Image Used



December 17, 2024

IGI Report Number LG670407955

CUSHION MODIFIED BRILLIANT

LABORATORY GROWN DIAMOND

5.46 X 4.10 X 2.76 MM

Carat Weight 0.48 CARAT

Color Grade D

Clarity Grade I.F.

Polish VERY GOOD

Symmetry VERY GOOD

Fluorescence NONE

Inscription(s) IGI LG670407955

Comments: This Laboratory Grown Diamond was created by Chemical Vapor Deposition (CVD) growth process. Type IIa



December 17, 2024

IGI Report Number LG670407955

CUSHION MODIFIED BRILLIANT

LABORATORY GROWN DIAMOND

5.46 X 4.10 X 2.76 MM

Carat Weight 0.48 CARAT

Color Grade D

Clarity Grade I.F.

Polish VERY GOOD

Symmetry VERY GOOD

Fluorescence NONE

Inscription(s) IGI LG670407955

Comments: This Laboratory Grown Diamond was created by Chemical Vapor Deposition (CVD) growth process. Type IIa



THIS DOCUMENT WAS PRODUCED WITH THE FOLLOWING SECURITY MEASURES: SPECIAL DOCUMENT PAPER, INK SCREENS, WATERMARK, BACKGROUND DESIGNS, HOLOGRAM AND OTHER SECURITY FEATURES NOT LISTED AND DO EXCEED DOCUMENT SECURITY INDUSTRY GUIDELINES.

For terms & conditions and to verify this report, please visit www.igi.org