



ELECTRONIC COPY

LABORATORY GROWN DIAMOND REPORT

December 2, 2024	
IGI Report Number	LG667442556
Description	LABORATORY GROWN DIAMOND
Shape and Cutting Style	OVAL BRILLIANT
Measurements	8.22 X 5.93 X 3.60 MM

GRADING RESULTS

Carat Weight	1.08 CARAT
Color Grade	E
Clarity Grade	VS2

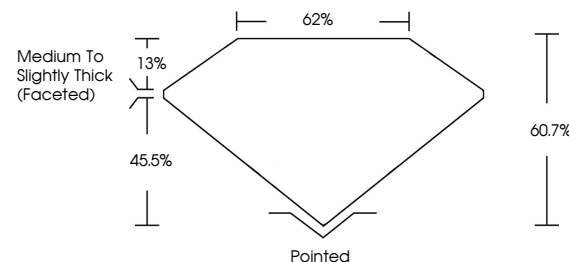
ADDITIONAL GRADING INFORMATION

Polish	EXCELLENT
Symmetry	EXCELLENT
Fluorescence	NONE
Inscription(s)	151 LG667442556

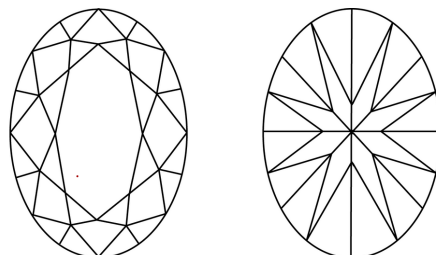
Comments: This Laboratory Grown Diamond was created by Chemical Vapor Deposition (CVD) growth process.
Type IIa

LG667442556
Report verification at lgi.org

PROPORTIONS



CLARITY CHARACTERISTICS



KEY TO SYMBOLS

Red symbols indicate internal characteristics.
Green symbols indicate external characteristics.

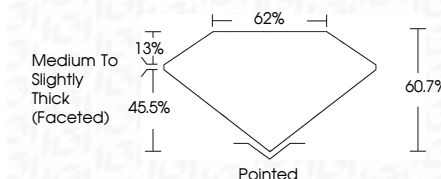
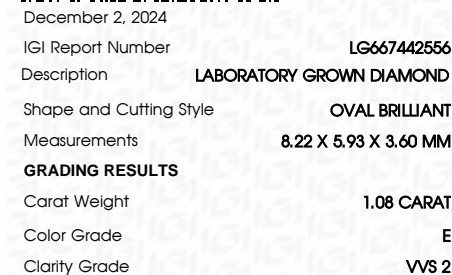


COLOR

D E F G H I J Faint Very Light Light

CLARITY

IF	VS ¹⁻²	VS ¹⁻²	SI ¹⁻²	I ¹⁻³
Internally Flawless	Very Very Slightly Included	Very Slightly Included	Slightly Included	Included



ADDITIONAL GRADING INFORMATION

Polish	EXCELLENT
Symmetry	EXCELLENT
Fluorescence	NONE
Inscription(s)	 LG667442556
<p>Comments: This Laboratory Grown Diamond was created by Chemical Vapor Deposition (CVD) growth process.</p> <p>Type IIa</p>	



© IGI 2020, International Gemological Institute

FD - 10 20

www.igi.org

THIS DOCUMENT WAS PRODUCED WITH THE FOLLOWING SECURITY MEASURES: SPECIAL DOCUMENT PAPER, INK SCREENS, WATERMARK BACKGROUND DESIGN, HOLOGRAM AND OTHER SECURITY FEATURES NOT LISTED AND DO EXCEED DOCUMENT SECURITY INDUSTRY GUIDELINES

December 2, 2024
GJ Report No | G667442556

GIA Report No. 15667462556	
DIAMANT BRILLANT	
22.22 X 5.93 X 3.40 MM	1.08 CARAT
Color Grade	E
Clarity Grade	VVS 2
Depth	60.7%
Table	62%
Grade	Medium to Slightly Thick (Faceted)
Culet	Pointed
Polish	EXCELLENT
Symmetry	EXCELLENT
Fluorescence	NONE
see GIA 57462556	

Comments:
This Laboratory Grown Diamond was created by Chemical Vapor Deposition (CVD) growth process.



Call 1-877-627-5094 to Purchase.

<https://www.adiamor.com/Lab-Diamonds/Details/D65361779>