



INTERNATIONAL GEMOLOGICAL INSTITUTE

ELECTRONIC COPY



June 24, 2025

IGI Report Number LG719516732

OVAL BRILLIANT

LABORATORY GROWN DIAMOND

7.84 X 5.66 X 3.56 MM

Carat Weight 0.99 CARAT

Color Grade D

Clarity Grade VVS 2

Polish EXCELLENT

Symmetry EXCELLENT

Fluorescence NONE

Inscription(s) IGI LG719516732

Comments: This Laboratory Grown Diamond was created by Chemical Vapor Deposition (CVD) growth process. Type IIa

LABORATORY GROWN DIAMOND REPORT

June 24, 2025

IGI Report Number

LG719516732

Description

LABORATORY GROWN DIAMOND

Shape and Cutting Style

OVAL BRILLIANT

Measurements

7.84 X 5.66 X 3.56 MM

GRADING RESULTS

Carat Weight

0.99 CARAT

Color Grade

D

Clarity Grade

VVS 2

ADDITIONAL GRADING INFORMATION

Polish

EXCELLENT

Symmetry

EXCELLENT

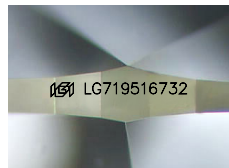
Fluorescence

NONE

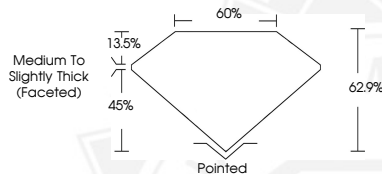
Inscription(s)

IGI LG719516732

Comments: This Laboratory Grown Diamond was created by Chemical Vapor Deposition (CVD) growth process. Type IIa



Sample Image Used



June 24, 2025

IGI Report Number LG719516732

OVAL BRILLIANT

LABORATORY GROWN DIAMOND

7.84 X 5.66 X 3.56 MM

Carat Weight 0.99 CARAT

Color Grade D

Clarity Grade VVS 2

Polish EXCELLENT

Symmetry EXCELLENT

Fluorescence NONE

Inscription(s) IGI LG719516732

Comments: This Laboratory Grown Diamond was created by Chemical Vapor Deposition (CVD) growth process. Type IIa



THIS DOCUMENT WAS PRODUCED WITH THE FOLLOWING SECURITY MEASURES: SPECIAL DOCUMENT PAPER, INK SCREENS, WATERMARK, BACKGROUND DESIGNS, HOLOGRAM AND OTHER SECURITY FEATURES NOT LISTED AND DO EXCEED DOCUMENT SECURITY INDUSTRY GUIDELINES.

For terms & conditions and to verify this report, please visit www.igi.org