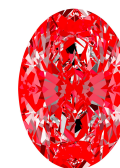




LG743549719  
Report verification at [igi.org](https://igi.org)

## LIGHT PERFORMANCE REPORT

**Light Performance Grade: Exceptional**



### Structured Light Environment Representation

Moderate      High      Superior      Exceptional

### Light Performance



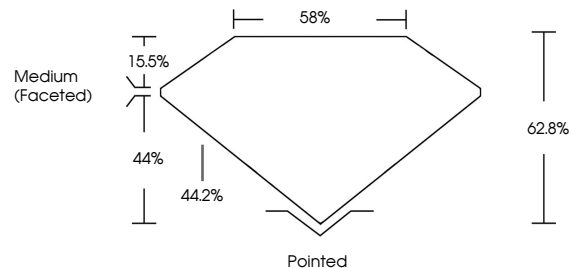
## COLOR

D E F G H I J Faint Very Light Light

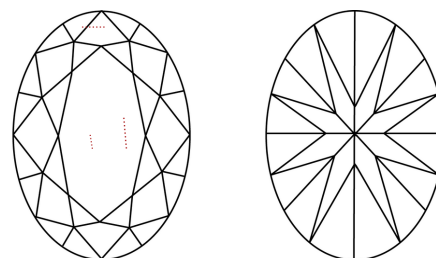
## CLARITY

FL	IF	VVS <sup>1-2</sup>	VS <sup>1-2</sup>	SI <sup>1-2</sup>	I <sup>1-3</sup>
Flawless	Internally Flawless	Very Very Slightly Included	Very Slightly Included	Slightly Included	Included

## PROPORTIONS



## CLARITY CHARACTERISTICS



## KEY TO SYMBOLS

Red symbols indicate internal characteristics.  
Green symbols indicate external characteristics.



Sample Image Used

**www.igi.org**

© IGI 2020, International Gemological Institute

FD - 10 20



October 27, 2025  
GI Report No LG743549719  
CVAI BRILLIANT

12.03 X 8.17 X 5.13 MM	3.10 CARATS	VS 1	62.8%	58%	Medium (Faceted)	Polished	EXCELLENT	EXCELLENT	NONE	Color (Very Slight Yellow)
Carat Weight	Color Grade	Clarity Grade	Depth	Table	Girdle	Culet	Polish	Symmetry	Fluorescence	Comments

**Comments:**  
This Laboratory Grown Diamond was created by Chemical Vapor Deposition (CVD) growth process.

October 27, 2025	
IGI Report Number	LG743549719
Description	LABORATORY GROWN DIAMOND
Shape and Cutting Style	OVAL BRILLIANT
Measurements	12.03 x 8.17 x 5.13 mm

## GRADING RESULTS

Carat Weight	3.10 CARATS
Color Grade	D
Clarity Grade	VS 1

### ADDITIONAL GRADING INFORMATION

Polish	EXCELLENT
Symmetry	EXCELLENT
Fluorescence	NONE
Inscription(s)	151 LG743549719

Comments: This Laboratory Grown Diamond was created by Chemical Vapor Deposition (CVD) growth process.  
Type IIa



**Call 1-877-627-5094 to Purchase.**

<https://www.adiamor.com/Lab-Diamonds/Details/D71150541>