

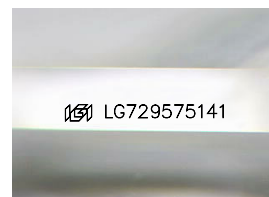
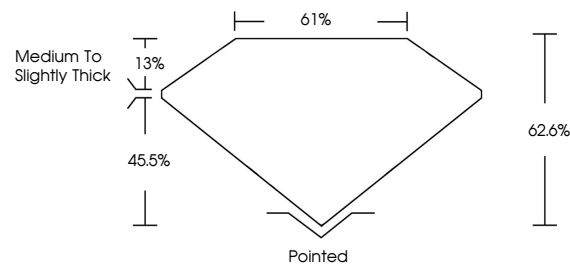


ELECTRONIC COPY

LABORATORY GROWN DIAMOND REPORT

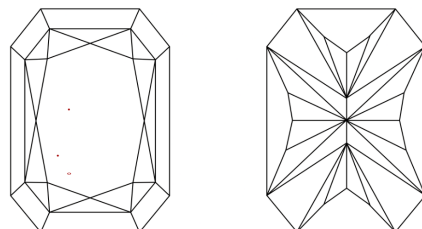
LG729575141
Report verification at lgi.org

PROPORTIONS



Sample Image Used

CLARITY CHARACTERISTICS



KEY TO SYMBOLS

Red symbols indicate internal characteristics.
Green symbols indicate external characteristics.

COLOR

D E F G H I J Faint Very Light Light

CLARITY

FL	IF	VVS ¹⁻²	VS ¹⁻²	SI ¹⁻²	I ¹⁻³
Flawless	Internally Flawless	Very Very Slightly Included	Very Slightly Included	Slightly Included	Included

LABORATORY GROWN DIAMOND REPORT



September 29, 2025

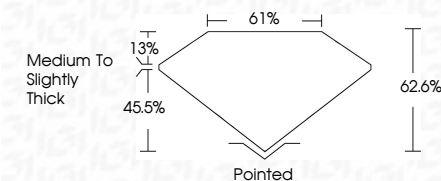
IGI Report Number **LG729575141**Description **LABORATORY GROWN DIAMOND**

Shape and Cutting Style

Measurements **7.89 X 5.45 X 3.41 MM**

GRADING RESULTS

Carat Weight 1.26 CARAT

Color Grade **E**Clarity Grade VVS 2

ADDITIONAL GRADING INFORMATION

Polish **EXCELLENT**Symmetry **EXCELLENT**Fluorescence **NONE**Inscription(s)  LG729575141

Comments: This Laboratory Grown Diamond was created by Chemical Vapor Deposition (CVD) growth process.
Type IIa



© IGI 2020, International Gemological Institute

FD - 10 20

www.igi.org

THIS DOCUMENT WAS PRODUCED WITH THE FOLLOWING SECURITY MEASURES: SPECIAL DOCUMENT PAPER, INK SCREENS, WATERMARK BACKGROUND DESIGNS, HOLOGRAM AND OTHER SECURITY FEATURES NOT LISTED AND DO EXCEED DOCUMENT SECURITY INDUSTRY GUIDELINES

September 29, 2025	GJ Report No LG729575141		CUT CORNERED RECT. MODIFIED BRILLIANT	
1.69 X 5.46 X 3.41 MM		1.26 CARAT	E	
Carat Weight	Color Grade	Clarity Grade	VVS 2	62.6%
Table	Depth	Gable	61%	Thick
Ratio	Ratio	Ratio	Medium to Slightly	Polished
Fluorescence	Fluorescence	Fluorescence	EXCELLENT	EXCELLENT
Inscriptions(s)	Inscriptions(s)	Inscriptions(s)	NONE	NONE
				1691 LG729575141
Comments: The Laboratory Grown Diamond was produced by the Vapor Deposition (VD) growth process. Type IIG				



Call 1-877-627-5094 to Purchase.

<https://www.adiamor.com/Lab-Diamonds/Details/D70710826>