



# INTERNATIONAL GEMOLOGICAL INSTITUTE

ELECTRONIC COPY

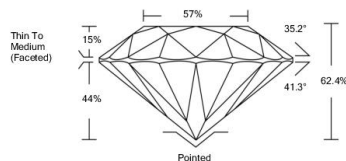
LABORATORY GROWN  
DIAMOND REPORT

LABORATORY GROWN DIAMOND REPORT

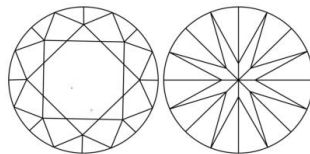
LG474123024

## LABORATORY GROWN DIAMOND REPORT

### PROPORTIONS



### CLARITY CHARACTERISTICS



### KEY TO SYMBOLS

Red symbols indicate internal characteristics.  
Green symbols indicate external characteristics.

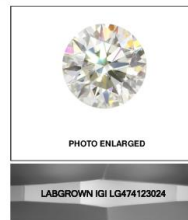
### GRADING SCALES

COLOR GRADING SCALE	CL		NC	FT	VLT	LT
	COLORLESS D-F		NEAR COLORLESS G-J	FANT K-M	VERY LIGHT N-R	LIGHT S-Z
CLARITY (10x) GRADING SCALE	FL	IF	VVS	VS	S1	I
	FLAWLESS INTERNALLY FLAWLESS		VERY VERY SLIGHTLY INCLUDED	VERY SLIGHTLY INCLUDED	SLIGHTLY INCLUDED	INCLUDED

The laboratory grown diamond described in this Report ("Report") has been graded, tested, analyzed, examined and/or inspected by International Gemological Institute (IGI). A laboratory grown diamond is one that has essentially the same chemical, physical and optical properties as a mined diamond, with the exception of being grown by man (a manufactured product). IGI employs and utilizes those techniques and equipment currently available to IGI, including, without limitation, for magnification, collected light images, binocular microscopes, master color comparison stones, non-contact optical measuring device, Diamond Sure™ Diamond Viewer™, Spectrophotometer and each other instrument and/or processes as deemed appropriate by IGI. This Report includes advanced security features. A fully accredited gemologist or jeweler can advise you with respect to the importance of and interrelationship between cut, color, clarity and carat weight.

**THIS REPORT IS NEITHER A GUARANTEE, VALUATION, NOR APPRAISAL OF THE GEMSTONE DESCRIBED HEREIN. PLEASE REVIEW THE LIMITATIONS AND RESTRICTIONS SET FORTH ONLINE. FOR ADDITIONAL INFORMATION, IMPORTANT LIMITATIONS AND DISCLAIMERS, PLEASE GO TO WWW.IGI.ORG OR CALL 1-888-807-1885.**

© INTERNATIONAL GEMOLOGICAL INSTITUTE, INC.



LASERSCRIBE™

05/28/2021

IGI Report Number

LG474123024

Shape and Cutting Style

ROUND BRILLIANT

Measurements

7.49 - 7.51 x 4.68 mm

### GRADING RESULTS

Carat Weight

1.60 CARAT

Color Grade

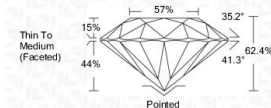
E

Clarity Grade

VS 1

Cut Grade

IDEAL



### ADDITIONAL GRADING INFORMATION

Polish

EXCELLENT

Symmetry

EXCELLENT

Fluorescence

NONE

Inscription(s)

LABGROWN IGI LG474123024

Comments: This Laboratory Grown Diamond was created by Chemical Vapor Deposition (CVD) growth process and may include post-growth treatment.  
Type IIa



© IGI 2020, International Gemological Institute

FD - 10 20

www.igi.org

Call 1-877-627-5094 to Purchase.

https://www.adiamor.com/Diamonds/Details/D49582625

Adiamor

IGI Report Number	IGI Report Number
LG474123024	LG474123024
Shape and Cutting Style	Shape and Cutting Style
ROUND BRILLIANT	ROUND BRILLIANT
Measurements	Measurements
7.49 - 7.51 x 4.68 mm	7.49 - 7.51 x 4.68 mm
Carat Weight	Carat Weight
1.60 CARAT	1.60 CARAT
Color Grade	Color Grade
E	E
Clarity Grade	Clarity Grade
VS 1	VS 1
Cut Grade	Cut Grade
IDEAL	IDEAL
Polish	Polish
EXCELLENT	EXCELLENT
Symmetry	Symmetry
EXCELLENT	EXCELLENT
Fluorescence	Fluorescence
NONE	NONE
Inscription(s)	Inscription(s)
LABGROWN IGI LG474123024	LABGROWN IGI LG474123024
Comments:	Comments:
This Laboratory Grown Diamond was created by Chemical Vapor Deposition (CVD) growth process and may include post-growth treatment.	This Laboratory Grown Diamond was created by Chemical Vapor Deposition (CVD) growth process and may include post-growth treatment.
Type IIa	Type IIa