



## ELECTRONIC COPY

LABORATORY GROWN  
DIAMOND REPORT

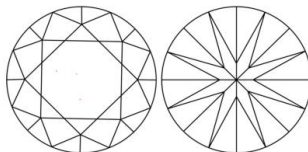
LABORATORY GROWN DIAMOND REPORT

LG459109203

## LABORATORY GROWN DIAMOND REPORT

## PROPORTIONS

### CLARITY CHARACTERISTICS

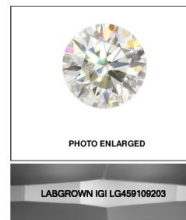


### KEY TO SYMBOLS

Red symbols indicate internal characteristics.  
Green symbols indicate external characteristics.

## GRADING SCALES

COLOR GRADING SCALE	CL		NC	FT	VLT	LT
	COLORLESS D-F		NEAR COLORLESS G-J	FAINT K-M	VERY LIGHT N-R	LIGHT S-Z
CLARITY (10) GRADING SCALE	FL	IF	VVS	VS	SI	I
	FLAWLESS INTERNALLY FLAWLESS		VERY VERY SLIGHTLY INCLUDED	VERY SLIGHTLY INCLUDED	SLIGHTLY INCLUDED	INCLUDED

[illegible]LASERSCRIBE<sup>SM</sup>

© IGI 2020, International Gemological Institute

FD-1020

02/04/2021

IGI Report Number  
Shape and Cutting Style  
Measurements

LG459109203  
ROUND BRILLIANT  
8.28 - 8.34 x 5.20 mm

### GRADING RESULTS

Carat Weight 2.22 CARATS

Color Grade	G
Clarity Grade	VS 1
Cut Grade	IDEAL

Diagram of a faceted diamond shape with dimensions:

- Top width: 56.5%
- Top-left facet width: 15.5%
- Top-right facet width: 35%
- Bottom width: 43.5%
- Bottom-right facet width: 40.9%
- Bottom-right facet angle: 62.5°
- Bottom point: Pointed

Text on the left: Medium To Slightly Thick (Faceted)

### ADDITIONAL GRADING INFORMATION

Polish	EXCELLENT
Symmetry	EXCELLENT
Fluorescence	NONE
Inscription(s)	LABGROWN IGI LG459109203

Comments: This Laboratory Grown Diamond was created by Chemical Vapor Deposition (CVD) growth process and may include post-growth treatment.  
Type IIa



IGI



Call 1-877-627-5094 to Purchase.

<https://www.adiamor.com/Diamonds/Details/D49639678>

2004052021	IG Report No. L0459/0603	
ROUND BRILLIANT		
Color Grade	2.27 CARATS	G
Weight		VS 1
Length	8.26 - 8.34 x 5.20 mm	IDEAL
Width		62.5%
Depth		56.5%
Table		Medium to Slighter Thick (Faced)
Setting		Pronged
Polish		EXCELLENT
Symmetry		EXCELLENT
Fluorescence		NONE
Comments		LANDORFIN GLO L0459/0603
This Laboratory Crown Diamond was created by Chemical Vapor Deposition (CVD) and may require post-growth treatment.		