



INTERNATIONAL
GEMOLOGICAL
INSTITUTE

ELECTRONIC COPY

LABORATORY GROWN
DIAMOND REPORT

LABORATORY GROWN DIAMOND REPORT

LG488124417

LABORATORY GROWN DIAMOND REPORT

November 30, 2021
IGI Report Number **LG488124417**
Description **LABORATORY GROWN
DIAMOND**
Shape and Cutting Style **ROUND BRILLIANT**
Measurements **7.58 - 7.64 X 4.69 MM**

GRADING RESULTS

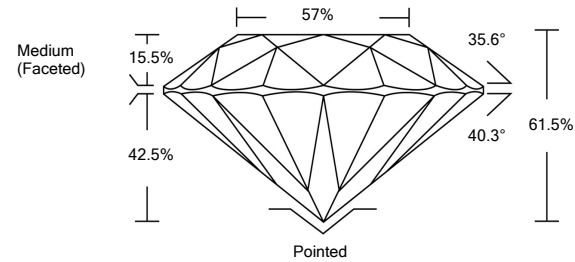
Carat Weight **1.70 CARAT**
Color Grade **D**
Clarity Grade **SI 2**
Cut Grade **IDEAL**

ADDITIONAL GRADING INFORMATION

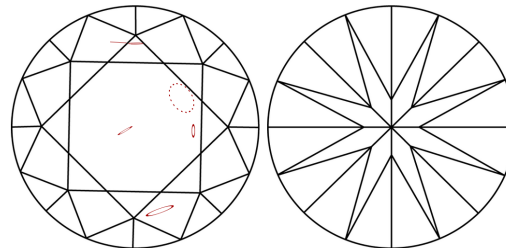
Polish **EXCELLENT**
Symmetry **EXCELLENT**
Fluorescence **NONE**
Inscription(s) **LABGROWN IGI LG488124417**

Comments: As Grown - No indication of post-growth treatment.
This Laboratory Grown Diamond was created by High Pressure High Temperature (HPHT) growth process.
Type II

PROPORTIONS



CLARITY CHARACTERISTICS



KEY TO SYMBOLS

Red symbols indicate internal characteristics.
Green symbols indicate external characteristics.

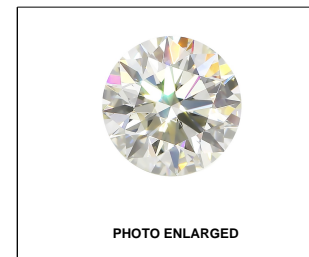
GRADING SCALES

COLOR GRADING SCALE	CL		NC		FT	VL	LT
	COLORLESS D-F		NEAR COLORLESS G-J		FAINT K-M	VERY LIGHT N-R	LIGHT S-Z
CLARITY (10x) GRADING SCALE	FL	IF	VVS	VS	SI	I	
	FLAWLESS INTERNALLY FLAWLESS		VERY VERY SLIGHTLY INCLUDED	VERY SLIGHTLY INCLUDED	SLIGHTLY INCLUDED	INCLUDED	

The laboratory grown diamond described in this Report (Report) has been graded, tested, analyzed, examined and/or inscribed by International Gemological Institute (IGI). A laboratory grown diamond is one that has essentially the same chemical, physical and optical properties as a mined diamond, with the exception of being grown by man (a manufactured product). IGI employs and utilizes those techniques and equipment currently available to IGI, including, without limitation, 10X magnification, corrected triplet loupe, binocular microscope, master color comparison stones, non-contact-optical measuring device, Diamond Sure™, Diamond View™, Spectrophotometer and such other instruments and/or processes as deemed appropriate by IGI. This Report includes advanced security features. A duly accredited gemologist or jeweler can advise you with respect to the importance of and interrelationship between cut, color, clarity and carat weight.

THIS REPORT IS NEITHER A GUARANTEE, VALUATION, NOR APPRAISAL OF THE GEMSTONE DESCRIBED HEREIN. PLEASE REVIEW THE LIMITATIONS AND RESTRICTIONS SET FORTH ONLINE. FOR ADDITIONAL INFORMATION, IMPORTANT LIMITATIONS AND DISCLAIMERS, PLEASE GO TO WWW.IGI.ORG OR CALL 1-888-BUY-IGIS.

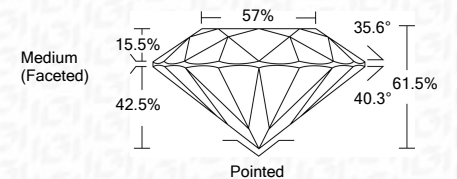
© INTERNATIONAL GEMOLOGICAL INSTITUTE, INC.



LABGROWN IGI LG488124417

LASERSCRIBESM

November 30, 2021
IGI Report Number **LG488124417**
Description **LABORATORY GROWN
DIAMOND**
Shape and Cutting Style **ROUND BRILLIANT**
Measurements **7.58 - 7.64 X 4.69 MM**
GRADING RESULTS
Carat Weight **1.70 CARAT**
Color Grade **D**
Clarity Grade **SI 2**
Cut Grade **IDEAL**



ADDITIONAL GRADING INFORMATION

Polish **EXCELLENT**
Symmetry **EXCELLENT**
Fluorescence **NONE**
Inscription(s) **LABGROWN IGI LG488124417**

Comments: As Grown - No indication of post-growth treatment.
This Laboratory Grown Diamond was created by High Pressure High Temperature (HPHT) growth process.
Type II



IGI

© IGI 2020, International Gemological Institute

FD - 10 20

THIS DOCUMENT WAS PRODUCED WITH THE FOLLOWING SECURITY MEASURES: SPECIAL DOCUMENT PAPER, INK SCREENS, WATERMARK BACKGROUND DESIGNS, HOLOGRAM AND OTHER SECURITY FEATURES NOT LISTED AND DO EXCEED DOCUMENT SECURITY INDUSTRY GUIDELINES.

November 30, 2021
IGI Report No. LG488124417
ROUND BRILLIANT
7.58 - 7.64 X 4.69 MM
Carat Weight 1.70 CARAT
Color Grade D
Clarity Grade SI 2
Depth 61.5%
Table 57%
Girdle Medium (Faceted)
Culet Pointed
Polish EXCELLENT
Symmetry EXCELLENT
Fluorescence NONE
Inscriptions(s) LABGROWN IGI LG488124417
Comments: As Grown - No indication of post-growth treatment.
This Laboratory Grown Diamond was created by High Pressure High Temperature (HPHT) growth process.
Type II



Call 1-877-627-5094 to Purchase.

<https://www.adiamor.com/Lab-Diamonds/Details/D49988117>