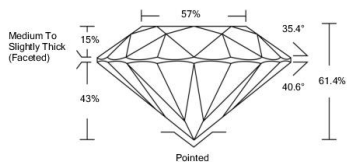




**LABORATORY GROWN DIAMOND REPORT**

LG510189841

**PROPORTIONS**



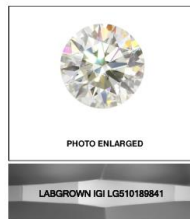
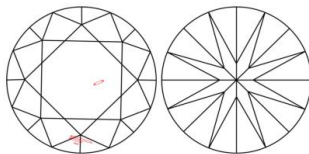
**GRADING SCALES**

COLOR GRADING SCALE	CL	NC	FT	VL	LT	
	COLORLESS DP	NEAR COLORLESS S4	FAINT KM	VERY LIGHT NH	LIGHT S2	
CLARITY (IGI GRADING SCALE)	FL	IF	VVS	VS	S	I
	FLAWLESS INTERNALLY FLAWLESS	VERY VERY SLIGHTLY INCLUDED	VERY SLIGHTLY INCLUDED	SLIGHTLY INCLUDED		INCLUDED

The laboratory grown diamond described in this Report ("Report") has been graded, tested, analyzed, measured and/or assessed by International Gemological Institute (IGI). A laboratory grown diamond is one that has essentially the same chemical, physical and optical properties as a mined diamond, with the exception of being grown by man (or manufactured products). Cut, weight, and other descriptive and important information currently available to IGI, including but not limited to: magnification, collected light leaks, binocular microscope, master color comparison stones, non-contact optical measuring device, Diamond Sure™ Diamond Viewer™, Spectrophotometer and such other instruments and/or processes as deemed appropriate by IGI. This Report includes additional security features. A duly accredited gemologist or jeweler can advise you with respect to the importance of and interrelationship between cut, color, clarity and carat weight. **THIS REPORT IS NEITHER A GUARANTEE, VALUATION, NOR APPRAISAL OF THE GEMSTONE DESCRIBED HEREIN. PLEASE REVIEW THE LIMITATIONS AND RESTRICTIONS SET FORTH ABOVE. FOR ADDITIONAL INFORMATION, IMPORTANT LIMITATIONS AND DISCLAIMERS, PLEASE GO TO WWW.IGI.ORG OR CALL 1-888-899-9933.**

© INTERNATIONAL GEMOLOGICAL INSTITUTE, INC.

**CLARITY CHARACTERISTICS**



**LASERSCRIBE™**

**KEY TO SYMBOLS**

Red symbols indicate internal characteristics.  
Green symbols indicate external characteristics.

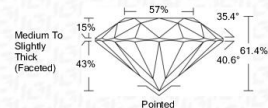
January 6, 2022  
IGI Report Number **LG510189841**  
Description **LABORATORY GROWN DIAMOND**  
Shape and Cutting Style **ROUND BRILLIANT**  
Measurements **7.66 - 7.75 X 4.72 MM**

**GRADING RESULTS**  
Carat Weight **1.72 CARAT**  
Color Grade **D**  
Clarity Grade **SI 1**  
Cut Grade **IDEAL**

**ADDITIONAL GRADING INFORMATION**  
Polish **EXCELLENT**  
Symmetry **EXCELLENT**  
Fluorescence **NONE**  
Inscription(s) **LABGROWN IGI LG510189841**

Comments: As Grown - No indication of post-growth treatment.  
This Laboratory Grown Diamond was created by High Pressure High Temperature (HPHT) growth process. Type II

January 6, 2022  
IGI Report Number **LG510189841**  
Description **LABORATORY GROWN DIAMOND**  
Shape and Cutting Style **ROUND BRILLIANT**  
Measurements **7.66 - 7.75 X 4.72 MM**  
**GRADING RESULTS**  
Carat Weight **1.72 CARAT**  
Color Grade **D**  
Clarity Grade **SI 1**  
Cut Grade **IDEAL**



**ADDITIONAL GRADING INFORMATION**  
Polish **EXCELLENT**  
Symmetry **EXCELLENT**  
Fluorescence **NONE**  
Inscription(s) **LABGROWN IGI LG510189841**

Comments: As Grown - No indication of post-growth treatment.  
This Laboratory Grown Diamond was created by High Pressure High Temperature (HPHT) growth process. Type II



January 6, 2022  
IGI Report No. LG510189841  
ROUND BRILLIANT  
Carat Weight 1.72 CARAT  
Color Grade D  
Clarity Grade SI 1  
Cut Grade IDEAL  
Measurements 7.66 - 7.75 X 4.72 MM  
Medium to Slightly Thick (Faceted)  
Polish EXCELLENT  
Symmetry EXCELLENT  
Fluorescence NONE  
Inscription(s) LABGROWN IGI LG510189841  
As Grown - No Indication of post-growth treatment.  
This Laboratory Grown Diamond was created by High Pressure High Temperature (HPHT) growth process. Type II