



# INTERNATIONAL GEMOLOGICAL INSTITUTE

ELECTRONIC COPY

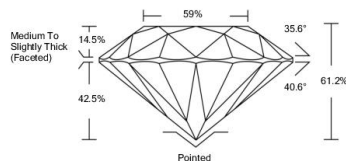
LABORATORY GROWN  
DIAMOND REPORT

LABORATORY GROWN DIAMOND REPORT

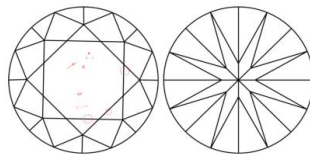
LG483103086

## LABORATORY GROWN DIAMOND REPORT

### PROPORTIONS



### CLARITY CHARACTERISTICS



### KEY TO SYMBOLS

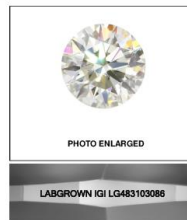
Red symbols indicate internal characteristics.  
Green symbols indicate external characteristics.

### GRADING SCALES

COLOR GRADING SCALE	CL	NC	FT	VLT	LT	
	COLORLESS D-F	NEAR COLORLESS G-J	FANT K-M	VERY LIGHT N-R	LIGHT S-Z	
CLARITY (10x) GRADING SCALE	FL	IF	VVS	VS	S	I
	FLAWLESS INTERNALLY FLAWLESS	VERY VERY SLIGHTLY INCLUDED	VERY SLIGHTLY INCLUDED	SLIGHTLY INCLUDED	INCLUDED	

The laboratory grown diamond described in this Report ("Report") has been graded, tested, analyzed, examined and/or described by International Gemological Institute (IGI). A laboratory grown diamond is one that has essentially the same chemical, physical and optical properties as a mined diamond, with the exception of being grown by man or manufactured process. IGI employs and utilizes those techniques and equipment currently available to IGI, including, without limitation, for magnification, collected light source, binocular microscope, master color comparison stones, non-contact optical measuring device, Diamond Sure™ Diamond Viewer™, Spectrophotometer and such other instruments and/or processes as deemed appropriate by IGI. This Report includes advanced security features. A duly accredited gemologist or jeweler can advise you with respect to the importance of and interrelationship between cut, color, clarity and carat weight. THIS REPORT IS NEITHER A GUARANTEE, VALUATION, NOR APPRAISAL OF THE GEMSTONE DESCRIBED HEREIN. PLEASE REVIEW THE LIMITATIONS AND RESTRICTIONS SET FORTH ONLINE. FOR ADDITIONAL INFORMATION, IMPORTANT LIMITATIONS AND DISCLAIMERS, PLEASE GO TO WWW.IGI.ORG OR CALL 1-877-897-8888.

© INTERNATIONAL GEMOLOGICAL INSTITUTE, INC.



LASERSCRIBE<sup>SM</sup>

07/08/2021

IGI Report Number

LG483103086

Shape and Cutting Style

ROUND BRILLIANT

Measurements

7.71 - 7.76 X 4.74 MM

### GRADING RESULTS

Carat Weight

1.77 CARAT

Color Grade

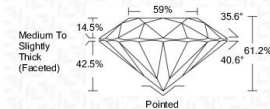
E

Clarity Grade

SI 2

Cut Grade

IDEAL



### ADDITIONAL GRADING INFORMATION

Polish

EXCELLENT

Symmetry

EXCELLENT

Fluorescence

NONE

Inscription(s)

LABGROWN IGI LG483103086

Comments: As Grown - No indication of post-growth treatment.  
This Laboratory Grown Diamond was created by High Pressure High Temperature (HPHT) growth process.  
Type II



© IGI 2020, International Gemological Institute

FD - 10 20

www.igi.org

Call 1-877-627-5094 to Purchase.

https://www.adiamor.com/Diamonds/Details/D49994499

Adiamor

07/08/2021	IGI Report No. LG483103086	E	1.77 CARAT
7.71 - 7.76 X 4.74 MM	ROUND BRILLIANT	SI 2	IDEAL
Color Grade	Clarity Grade	Depth	61.2%
Fluorescence	Cut Grade	Medium To Slightly Thick (Faceted)	Pointed
Polish	Symmetry	EXCELLENT	EXCELLENT
Fluorescence	None	LABGROWN IGI	LABGROWN IGI LG483103086
Comments:	No indication of post-growth treatment.	Laboratory Grown Diamond was created by High Pressure High Temperature (HPHT) growth process.	Type II