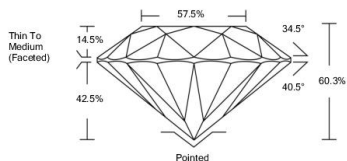




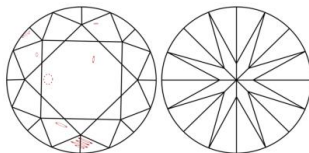
LQ483195629

LABORATORY GROWN DIAMOND REPORT

PROPORTIONS



CLARITY CHARACTERISTICS



KEY TO SYMBOLS

Red symbols indicate internal characteristics.
Green symbols indicate external characteristics.

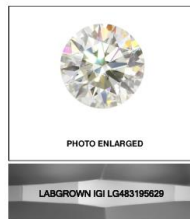
GRADING SCALES

COLOR GRADING SCALE	CL	NC	FT	VL	LT
COLORLESS	DP	NEAR COLORLESS	FAINT KM	VERY LIGHT NH	LIGHT S2

CLARITY (IAGI) GRADING SCALE	FL	IF	VVS	VS	S	I
FLAWLESS INTERNALLY FLAWLESS	VERY VERY SLIGHTLY INCLUDED	VERY SLIGHTLY INCLUDED	SLIGHTLY INCLUDED	INCLUDED		

The laboratory grown diamond described in this Report ("Report") has been graded, tested, analyzed, measured and/or described by International Gemological Institute (IGI). A laboratory grown diamond is one that has essentially the same chemical, physical and optical properties as a mined diamond, with the exception of being grown by man or manufactured processes. Cut, weight, and other features and measurements currently available to IGI, including but not limited to, magnification, collected light leaks, binocular microscope, master color comparison stones, non-conductivity measuring device, Diamond Sure™ Diamond Viewer™ Spectrophotometer and such other instruments and/or processes as deemed appropriate by IGI. This Report includes additional security features. A duly accredited gemologist or jeweler can advise you with respect to the importance of and interrelationship between cut, color, clarity and carat weight. **THIS REPORT IS NEITHER A GUARANTEE, VALUATION, NOR APPRAISAL OF THE GEMSTONE DESCRIBED HEREIN. PLEASE REVIEW THE LIMITATIONS AND RESTRICTIONS SET FORTH ABOVE. FOR ADDITIONAL INFORMATION, IMPORTANT LIMITATIONS AND DISCLAIMERS, PLEASE GO TO WWW.IGI.ORG OR CALL 1-888-809-9888.**

© INTERNATIONAL GEMOLOGICAL INSTITUTE, INC.



LASERSCRIBESM

06/30/2021

IGI Report Number **LQ483195629**
 Shape and Cutting Style **ROUND BRILLIANT**
 Measurements **7.74 - 7.78 x 4.68 mm**
GRADING RESULTS
 Carat Weight **1.71 CARAT**
 Color Grade **D**
 Clarity Grade **SI 2**
 Cut Grade **IDEAL**



ADDITIONAL GRADING INFORMATION

Polish **EXCELLENT**
 Symmetry **EXCELLENT**
 Fluorescence **NONE**
 Inscription(s) **LABGROWN IGI LQ483195629**

Comments: As Grown - No indication of post-growth treatment.
 This Laboratory Grown Diamond was created by High Pressure High Temperature (HPHT) growth process.
 Type II



REPORT
 IGI Report Number: LQ483195629
 ROUND BRILLIANT
 Measurements: 7.74 - 7.78 x 4.68 mm
 Carat Weight: 1.71 CARAT
 Color Grade: D
 Clarity Grade: SI 2
 Cut Grade: IDEAL
 Polish: EXCELLENT
 Symmetry: EXCELLENT
 Fluorescence: NONE
 Inscription(s): LABGROWN IGI LQ483195629
 Comments: No indication of post-growth treatment. This Laboratory Grown Diamond was created by High Pressure High Temperature (HPHT) growth process. Type II