

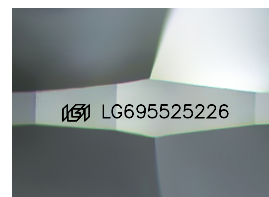
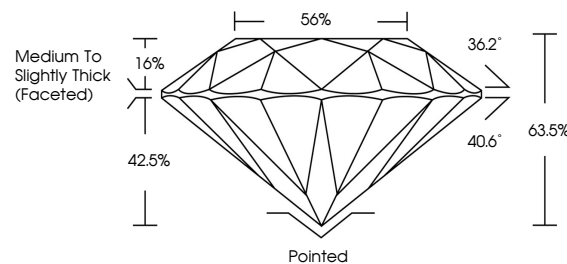


ELECTRONIC COPY

LABORATORY GROWN DIAMOND REPORT

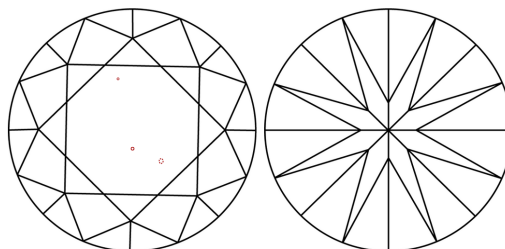
LG695525226
Report verification at igi.org

PROPORTIONS



Sample Image Used

CLARITY CHARACTERISTICS



KEY TO SYMBOLS

Red symbols indicate internal characteristics.
Green symbols indicate external characteristics.

COLOR

D E F G H I J Faint Very Light Light

CLARITY

IF WS¹⁻² VS¹⁻² SI¹⁻² |¹⁻³

Internally Flawless	Very Very Slightly Included	Very Slightly Included	Slightly Included	Included
------------------------	--------------------------------	---------------------------	----------------------	----------



March 31, 2025

IGI Report Number **LG695525226**

Description	LABORATORY GROWN DIAMOND
-------------	--------------------------

Shape and Cutting Style **ROUND BRILLIANT**

Measurements	7.93 - 7.96 X 5.04 MM
--------------	-----------------------

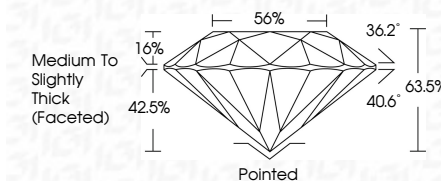
GRADING RESULTS

Carat Weight **1.99 CARAT**

Color Grade F

Clarity Grade VS 1

Cut Grade **EXCELLENT**



ADDITIONAL GRADING INFORMATION

Polish **EXCELLENT**Symmetry **EXCELLENT**Fluorescence **NONE**Inscription(s) LG695525226

Comments: This Laboratory Grown Diamond was created by Chemical Vapor Deposition (CVD) growth process.
Type IIa



IG



© IGI 2020, International Gemological Institute

FD - 10 20

www.igi.org

Call 1-877-627-5094 to Purchase.

<https://www.adiamor.com/Lab-Diamonds/Details/D67616472>

