

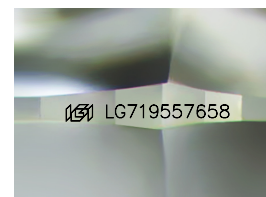
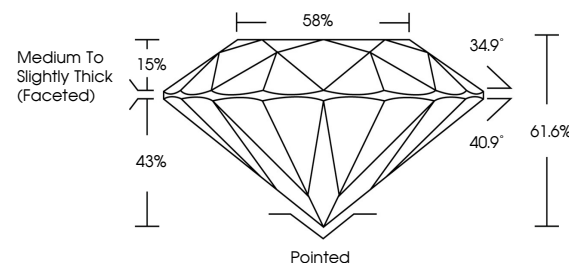


**ELECTRONIC COPY**

## LABORATORY GROWN DIAMOND REPORT

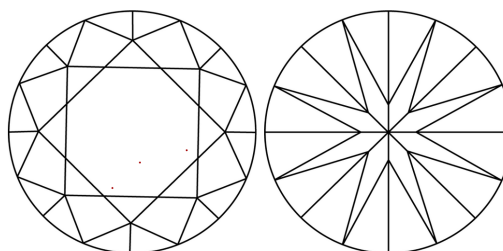
LG719557658  
Report verification at [igi.org](https://igi.org)

## PROPORTIONS



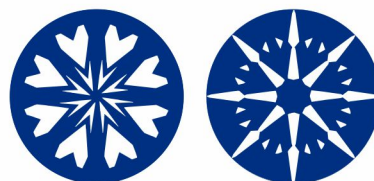
Sample Image Used

## CLARITY CHARACTERISTICS



## KEY TO SYMBOLS

Red symbols indicate internal characteristics.  
Green symbols indicate external characteristics.



**www.igi.org**

## COLOR

D E F G H I J Faint Very Light Light

## CLARITY

IF                      VS<sup>1-2</sup>                      VS<sup>1-2</sup>                      S<sup>1-2</sup>                      |<sup>1-3</sup>

Internally Flawless	Very Very Slightly Included	Very Slightly Included	Slightly Included	Included
------------------------	--------------------------------	---------------------------	----------------------	----------



© IGI 2020, International Gemological Institute

FD - 10 20

LABORATORY GROWN DIAMOND REPORT



July 5, 2025

IGI Report Number **LG719557658**Description **LABORATORY GROWN DIAMOND**Shape and Cutting Style **ROUND BRILLIANT**

Measurements 10.19 - 10.23 X 6.29 MM

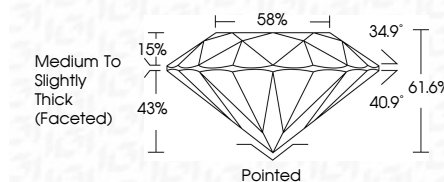
## GRADING RESULTS

Carat Weight **4.03 CARATS**

Color Grade F

Clarity Grade VVS 2

Cut Grade **IDEAL**



### ADDITIONAL GRADING INFORMATION

Polish EXCELLENT

Symmetry **EXCELLENT**Fluorescence **NONE**Inscription(s)  LG719557658

Comments: HEARTS & ARROWS

This Laboratory Grown Diamond was created by Chemical Vapor Deposition (CVD) growth process.  
Type IIa



July 5, 2025	Carat Weight	4.03 CARATS
GI Report No. LG719557458	Color Grade	F
ROUND BRILLIANT	Clarity Grade	VVS 2
10.10.19 - 10.23 X 6.29 MM	Cut Grade	IDEAL
	Depth	61.6%
	Table	85%
	Girdle	Medium to Slightly Thick (Faceted)
	Culet	Pointed
	Polish	EXCELLENT
	Symmetry	EXCELLENT
	Fluorescence	NONE
	Inscriptions(s)	168 LG719557458
	Comments:	
	HEARTS & ARROWS	
	This Laboratory Grown Diamond was created by Chemical Vapor Deposition (CVD) growth process.	



**Call 1-877-627-5094 to Purchase.**

<https://www.adiamor.com/Lab-Diamonds/Details/D69037249>