



INTERNATIONAL GEMOLOGICAL INSTITUTE

ELECTRONIC COPY

LABORATORY GROWN DIAMOND REPORT

July 24, 2025
IGI Report Number **LG707551597**
Description **LABORATORY GROWN DIAMOND**
Shape and Cutting Style **ROUND BRILLIANT**
Measurements **5.74 - 5.77 X 3.47 MM**

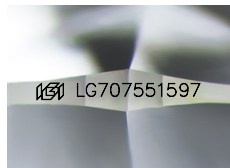
GRADING RESULTS

Carat Weight **0.70 CARAT**
Color Grade **E**
Clarity Grade **INTERNALLY FLAWLESS**
Cut Grade **IDEAL**

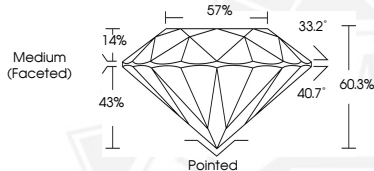
ADDITIONAL GRADING INFORMATION

Polish **EXCELLENT**
Symmetry **EXCELLENT**
Fluorescence **NONE**
Inscription(s) **IGI LG707551597**

Comments: As Grown - No indication of post-growth treatment.
This Laboratory Grown Diamond was created by High Pressure High Temperature (HPHT) growth process.
Type II



Sample Image Used



THIS DOCUMENT WAS PRODUCED WITH THE FOLLOWING SECURITY MEASURES: SPECIAL DOCUMENT PAPER, INK SCREENS, WATERMARK, BACKGROUND DESIGNS, HOLOGRAM AND OTHER SECURITY FEATURES NOT LISTED AND DO EXCEED DOCUMENT SECURITY INDUSTRY GUIDELINES.

For terms & conditions and to verify this report, please visit www.igi.org



July 24, 2025

IGI Report Number **LG707551597**
ROUND BRILLIANT
LABORATORY GROWN DIAMOND
5.74 - 5.77 X 3.47 MM

Carat Weight **0.70 CARAT**
Color Grade **E**
Clarity Grade **I.F.**
Cut Grade **IDEAL**
Polish **EXCELLENT**
Symmetry **EXCELLENT**
Fluorescence **NONE**
Inscription(s) **IGI LG707551597**

Comments: As Grown - No indication of post-growth treatment. This Laboratory Grown Diamond was created by High Pressure High Temperature (HPHT) growth process. Type II



July 24, 2025

IGI Report Number **LG707551597**
ROUND BRILLIANT
LABORATORY GROWN DIAMOND
5.74 - 5.77 X 3.47 MM

Carat Weight **0.70 CARAT**
Color Grade **E**
Clarity Grade **I.F.**
Cut Grade **IDEAL**
Polish **EXCELLENT**
Symmetry **EXCELLENT**
Fluorescence **NONE**
Inscription(s) **IGI LG707551597**

Comments: As Grown - No indication of post-growth treatment. This Laboratory Grown Diamond was created by High Pressure High Temperature (HPHT) growth process. Type II