



INTERNATIONAL GEMOLOGICAL INSTITUTE

ELECTRONIC COPY

LG670441180

LABORATORY GROWN DIAMOND REPORT

December 24, 2024

IGI Report Number

LG670441180

Description

LABORATORY GROWN DIAMOND

Shape and Cutting Style

ROUND BRILLIANT

Measurements

5.41 - 5.44 X 3.27 MM

GRADING RESULTS

Carat Weight

0.57 CARAT

Color Grade

D

Clarity Grade

VVS 2

Cut Grade

VERY GOOD

ADDITIONAL GRADING INFORMATION

Polish

GOOD

Symmetry

GOOD

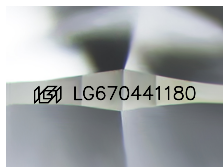
Fluorescence

NONE

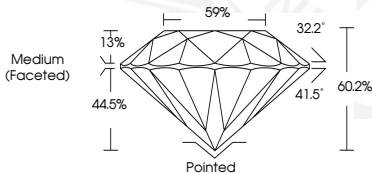
Inscription(s)

IGI LG670441180

Comments: This Laboratory Grown Diamond was created by Chemical Vapor Deposition (CVD) growth process. Type IIa



Sample Image Used



December 24, 2024

IGI Report Number LG670441180

ROUND BRILLIANT

LABORATORY GROWN DIAMOND

5.41 - 5.44 X 3.27 MM

Carat Weight 0.57 CARAT

Color Grade D

Clarity Grade VVS 2

Cut Grade VERY GOOD

Polish GOOD

Symmetry GOOD

Fluorescence NONE

Inscription(s) IGI LG670441180

Comments: This Laboratory Grown Diamond was created by Chemical Vapor Deposition (CVD) growth process. Type IIa



December 24, 2024

IGI Report Number LG670441180

ROUND BRILLIANT

LABORATORY GROWN DIAMOND

5.41 - 5.44 X 3.27 MM

Carat Weight 0.57 CARAT

Color Grade D

Clarity Grade VVS 2

Cut Grade VERY GOOD

Polish GOOD

Symmetry GOOD

Fluorescence NONE

Inscription(s) IGI LG670441180

Comments: This Laboratory Grown Diamond was created by Chemical Vapor Deposition (CVD) growth process. Type IIa



THIS DOCUMENT WAS PRODUCED WITH THE FOLLOWING SECURITY MEASURES: SPECIAL DOCUMENT PAPER, INK SCREENS, WATERMARK, BACKGROUND DESIGNS, HOLOGRAM AND OTHER SECURITY FEATURES NOT LISTED AND DO EXCEED DOCUMENT SECURITY INDUSTRY GUIDELINES.

For terms & conditions and to verify this report, please visit www.igi.org