

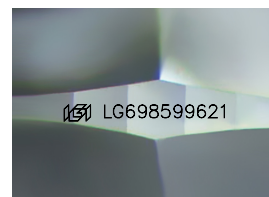
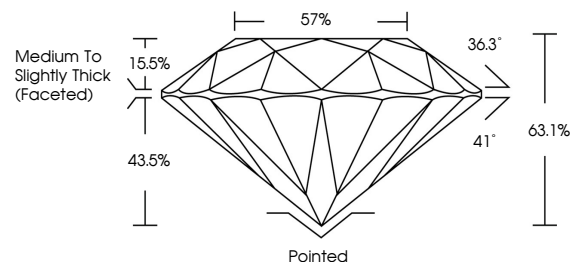


ELECTRONIC COPY

LABORATORY GROWN DIAMOND REPORT

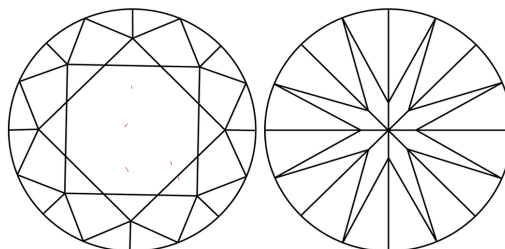
LG698599621
Report verification at lgi.org

PROPORTIONS



Sample Image Used

CLARITY CHARACTERISTICS



KEY TO SYMBOLS

Red symbols indicate internal characteristics.
Green symbols indicate external characteristics.

COLOR

D E F G H I J Faint Very Light Light

CLARITY

IF WS¹⁻² VS¹⁻² S¹⁻² |¹⁻³

Internally Flawless	Very Very Slightly Included	Very Slightly Included	Slightly Included	Included
------------------------	--------------------------------	---------------------------	----------------------	----------

LABORATORY GROWN DIAMOND REPORT



April 16, 2025

IGI Report Number **LG698599621**Description **LABORATORY GROWN DIAMOND**Shape and Cutting Style **ROUND BRILLIANT**

Measurements 7.18 - 7.23 X 4.54 MM

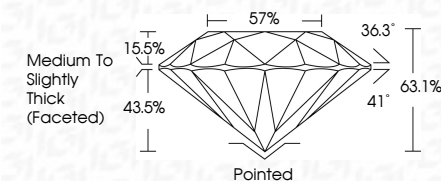
GRADING RESULTS

Carat Weight 1.47 CARAT

Color Grade

Clarity Grade **VVS 2**

Cut Grade **EXCELLENT**



ADDITIONAL GRADING INFORMATION

Polish **EXCELLENT**Symmetry **EXCELLENT**Fluorescence **NONE**Inscription(s)  LG698599621

Comments: As Grown - No indication of post-growth treatment.

This Laboratory Grown Diamond was created by High Pressure High Temperature (HPHT) growth process.

Type II



IG



© IGI 2020, International Gemological Institute

FD - 10 20

www.igi.org

Call 1-877-627-5094 to Purchase.

<https://www.adiamor.com/Lab-Diamonds/Details/D71145429>



THIS DOCUMENT WAS PRODUCED WITH THE FOLLOWING SECURITY MEASURES: SPECIAL DOCUMENT PAPER, INK SCREENS, WATERMARK BACKGROUND DESIGNS, HOLOGRAM AND OTHER SECURITY FEATURES NOT LISTED AND DO EXCEED DOCUMENT SECURITY INDUSTRY GUIDELINES