

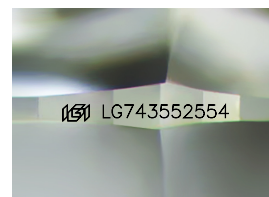
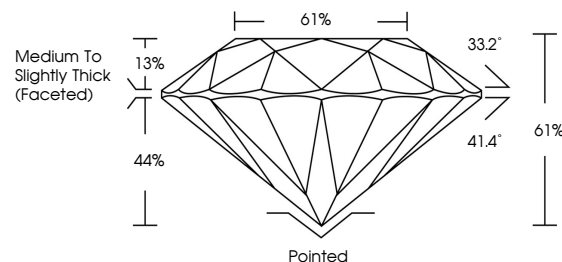


**ELECTRONIC COPY**

## LABORATORY GROWN DIAMOND REPORT

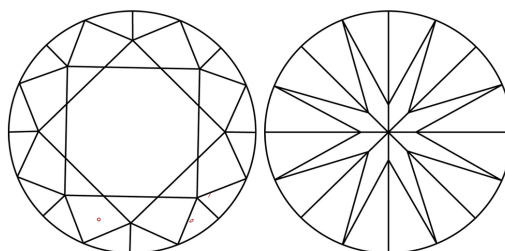
LG743552554  
Report verification at [lgi.org](https://lgi.org)

## PROPORTIONS



Sample Image Used

## CLARITY CHARACTERISTICS



## KEY TO SYMBOLS

Red symbols indicate internal characteristics.  
Green symbols indicate external characteristics.

## COLOR

D E F G H I J Faint Very Light Light

## CLARITY

FL	IF	VVS <sup>1-2</sup>	VS <sup>1-2</sup>	SI <sup>1-2</sup>	I <sup>1-3</sup>
Flawless	Internally Flawless	Very Very Slightly Included	Very Slightly Included	Slightly Included	Included

## LABORATORY GROWN DIAMOND REPORT



October 17, 2025

IGI Report Number **LG743552554**Description **LABORATORY GROWN DIAMOND**Shape and Cutting Style **ROUND BRILLIANT**

Measurements 9.25 - 9.31 X 5.66 MM

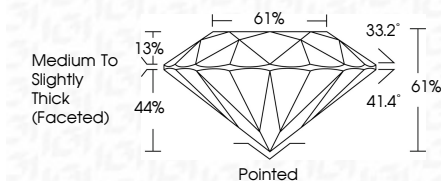
## GRADING RESULTS

Carat Weight **3.00 CARATS**

Color Grade **G**

Clarity Grade VS 1

Cut Grade **EXCELLENT**



### ADDITIONAL GRADING INFORMATION

Polish **EXCELLENT**Symmetry **EXCELLENT**Fluorescence **NONE**Inscription(s)  LG743552554

Comments: This Laboratory Grown Diamond was created by Chemical Vapor Deposition (CVD) growth process.  
Type IIa



© IGI 2020, International Gemological Institute

FD - 10 20

**www.igi.org**

**Call 1-877-627-5094 to Purchase.**

<https://www.adiamor.com/Lab-Diamonds/Details/D71150578>



THIS DOCUMENT WAS PRODUCED WITH THE FOLLOWING SECURITY MEASURES: SPECIAL DOCUMENT PAPER, INK SCREENS, WATERMARK BACKGROUND DESIGNS, HOLOGRAM AND OTHER SECURITY FEATURES NOT LISTED AND DO EXCEED DOCUMENT SECURITY INDUSTRY GUIDELINES