

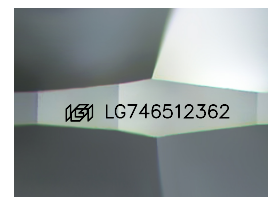
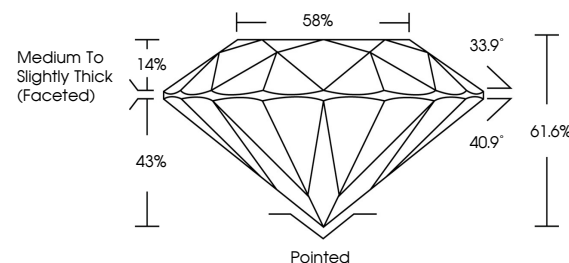


**ELECTRONIC COPY**

## LABORATORY GROWN DIAMOND REPORT

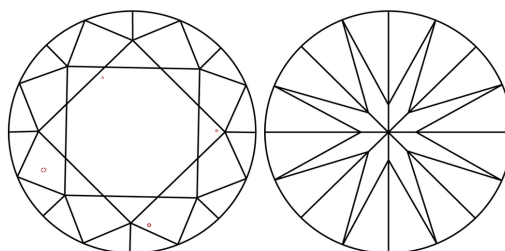
LG746512362  
Report verification at [lgi.org](https://lgi.org)

## PROPORTIONS



Sample Image Used

## CLARITY CHARACTERISTICS



## KEY TO SYMBOLS

Red symbols indicate internal characteristics.  
Green symbols indicate external characteristics.

## COLOR

D E F G H I J Faint Very Light Light

## CLARITY

FL	IF	VVS <sup>1-2</sup>	VS <sup>1-2</sup>	SI <sup>1-2</sup>	I <sup>1-3</sup>
Flawless	Internally Flawless	Very Very Slightly Included	Very Slightly Included	Slightly Included	Included

## LABORATORY GROWN DIAMOND REPORT



October 30, 2025

IGI Report Number **LG746512362**Description **LABORATORY GROWN DIAMOND**Shape and Cutting Style **ROUND BRILLIANT**

Measurements 9.10 - 9.16 X 5.63 MM

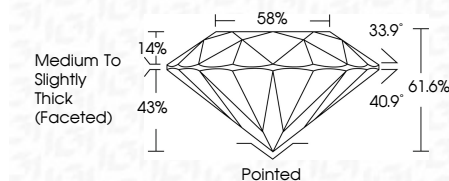
## GRADING RESULTS

Carat Weight **2.91 CARATS**

Color Grade E

Clarity Grade VS 1

Cut Grade **EXCELLENT**



### ADDITIONAL GRADING INFORMATION

Polish **EXCELLENT**Symmetry **EXCELLENT**Fluorescence **NONE**Inscription(s)  LG746512362

Comments: This Laboratory Grown Diamond was created by Chemical Vapor Deposition (CVD) growth process.  
Type IIa



© IGI 2020, International Gemological Institute

FD - 10 20

**www.igi.org**

THIS DOCUMENT WAS PRODUCED WITH THE FOLLOWING SECURITY MEASURES: SPECIAL DOCUMENT PAPER, INK SCREENS, WATERMARK BACKGROUND DESIGN, HOLOGRAM AND OTHER SECURITY FEATURES NOT LISTED AND DO EXCEED DOCUMENT SECURITY INDUSTRY GUIDELINES

October 30, 2025  
GI Report No LG746512362  
ROUND BRILLIANT

<b>ROUND BRILLIANT</b>	<b>2.91 CARATS</b>	<b>VVS1</b>	<b>EXCELLENT</b>	<b>61.06%</b>	<b>58%</b>	<b>Medium to Slightly Thick Facet(s)</b>	<b>Poined</b>	<b>EXCELLENT</b>	<b>EXCELLENT</b>	<b>NONE</b>	<b>Serial 12744519902</b>
<b>10 - 11 x 5.63 MM</b>	<b>Carat Weight</b>	<b>Clarity Grade</b>	<b>Color Grade</b>	<b>Cut Grade</b>	<b>Depth</b>	<b>Girdle</b>	<b>Culet</b>	<b>Polish</b>	<b>Symmetry</b>	<b>Fluorescence</b>	

**Comments:**  
This Laboratory Grown Diamond was created by Chemical Vapor Deposition (CVD) growth process.



**Call 1-877-627-5094 to Purchase.**

<https://www.adiamor.com/Lab-Diamonds/Details/D71283089>