



GIA
GEMOLOGICAL INSTITUTE OF AMERICA®

5355 Arroyo Drive | Carlsbad, CA 92008-4602
T: 760-603-4500 | F: 760-603-1814

GIA Laboratories
Bangkok Carlsbad Gahartine
Johannesburg Mumbai New York

www.gia.edu

DIAMOND GRADING REPORT

May 27, 2013

Shape and Cutting Style **Square Modified Brilliant**

Measurements **5.77 x 5.54 x 4.00 mm**

GRADING RESULTS

Carat Weight **1.03 carat**
Color Grade **G**
Clarity Grade **S12**

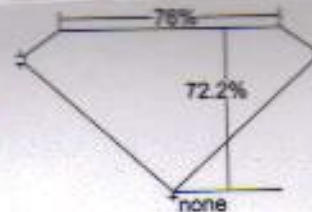
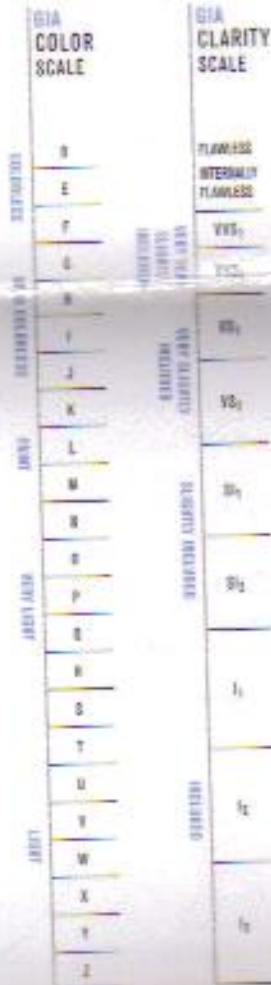
ADDITIONAL GRADING INFORMATION

Finish
Polish **Excellent**
Symmetry **Good**
Fluorescence **None**
Comments:
Additional clouds are not shown.
Pinpoints are not shown.

REFERENCE DIAGRAMS



very thin - very thick



Profile not to actual proportions



KEY TO SYMBOLS

- Cloud
- ◊ Crystal
- ~ Feather
- ∖ Needle
- △ Natural
- ▲ Extra Facet

Red symbols denote internal characteristics (inclusions). Green or black symbols denote external characteristics (blemishes). Diagram is an approximate representation of the diamond, and symbols shown indicate type, position, and approximate size of clarity characteristics. All clarity characteristics may not be shown. Details of finish are not shown.

This Report is not a guarantee, whether in support or contains only the characteristics of the diamond described herein after a ten-hour graded, tested, measured and analyzed by the laboratory providing the Report ("GR") and/or has been certified using the techniques and equipment used by GIA at the time of the certificate's issuance. Information reported in this document, including the color, clarity, or weight of a diamond's quality, quantity of stones or goods, or that the diamond will be identified by the laboratory in the future based on information can be removed. GIA makes no representation concerning any customer, user or system which is recorded by GIA or which is certified in this Report. The recipient of this Report may wish to consult a qualified jeweler or gemologist about the information contained herein.



IMPORTANT LIMITATIONS ON BACK

©2008 GEMOLOGICAL INSTITUTE OF AMERICA, INC.

GIA REPORT 3155238060