

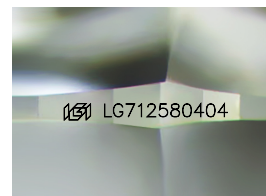
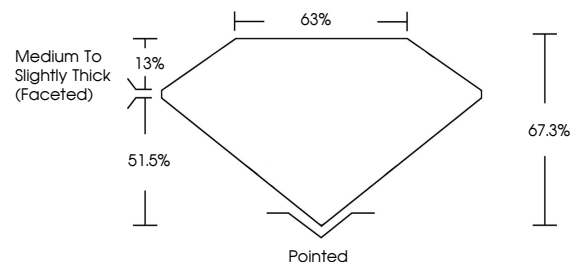


ELECTRONIC COPY

LABORATORY GROWN DIAMOND REPORT

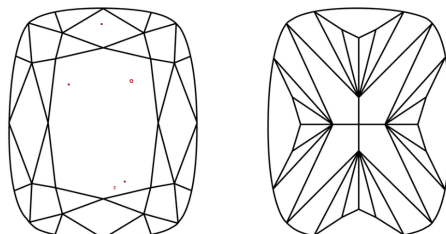
LG712580404
Report verification at lgi.org

PROPORTIONS



Sample Image Used

CLARITY CHARACTERISTICS



KEY TO SYMBOLS

Red symbols indicate internal characteristics.
Green symbols indicate external characteristics.

COLOR

D E F G H I J Faint Very Light Light

CLARITY

IF VWS¹⁻² VS¹⁻² SI¹⁻² I¹⁻³

Internally Flawless	Very Very Slightly Included	Very Slightly Included	Slightly Included	Included
------------------------	--------------------------------	---------------------------	----------------------	----------

LABORATORY GROWN DIAMOND REPORT



June 5, 2025

IGI Report Number **LG712580404**

Description	LABORATORY GROWN DIAMOND
-------------	--------------------------

Shape and Cutting Style **CUSHION MODIFIED
BRILLIANT**

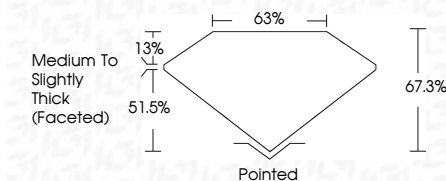
Measurements **9.94 X 7.67 X 5.16 MM**

GRADING RESULTS

Carat Weight **3.10 CARATS**

Color Grade E

Clarity Grade VS 1



ADDITIONAL GRADING INFORMATION

Polish **EXCELLENT**Symmetry **EXCELLENT**Fluorescence **NONE**Inscription(s) LG712580404

Comments: This Laboratory Grown Diamond was created by Chemical Vapor Deposition (CVD) growth process.
Type IIa



© IGI 2020, International Gemological Institute

FD - 10 20

www.igi.org

Call 1-877-627-5094 to Purchase.

<https://www.adiamor.com/Lab-Diamonds/Details/D68580004>



June 5, 2005	GI Report No. LG71256004	3.10 CARATS	VS 1	Medium to Slightly Thick (Faceted)	Pointed	NONE	1691 LG71256004
GI Report No. LG71256004	CUSHION MODIFIED BRILLIANT	E	67.3%		Excellent		
64.94 X 50.76 X 5.16 MM			65%		Excellent		
		Carat Weight	Clarity Grade		Culet		
		Color Grade	Depth		Polish		
			Table		Symmetry		
			Gable		Fluorescence		
					Inscriptions(s)		

Comments: The Laboratory Grown Diamond was produced by the Chemical Vapor Deposition (CVD) growth process.

Type IIG